

Tubular CPT1A deletion minimally affects aging and chronic kidney injury

Safaa Hammoud, ... , Irfan J. Lodhi, Leslie S. Gewin

JCI Insight. 2024;9(9):e181816. <https://doi.org/10.1172/jci.insight.181816>.

Corrigendum

Original citation *JCI Insight.* 2024;9(6):e171961. <https://doi.org/10.1172/jci.insight.171961> Citation for this corrigendum: *JCI Insight.* 2024;9(9):e181816. <https://doi.org/10.1172/jci.insight.181816> The authors recently became aware of an inadvertent error in Figure 1I. The Young, Cpt1aCKO panel was incorrect and the same as the Aged, Cpt1aCKO panel. The correct panel is shown below. The authors regret the error.

Find the latest version:

<https://jci.me/181816/pdf>



Corrigendum

Tubular CPT1A deletion minimally affects aging and chronic kidney injury

Safaa Hammoud, Alla Ivanova, Yosuke Osaki, Steven Funk, Haichun Yang, Olga Viquez, Rachel Delgado, Dongliang Lu, Melanie Phillips Mignemi, Jane Tonello, Selene Colon, Louise Lantier, David H. Wasserman, Benjamin D. Humphreys, Jeffrey Koenitzer, Justin Kern, Mark de Caestecker, Toren Finkel, Agnes Fogo, Nidia Messias, Irfan J. Lodhi, and Leslie S. Gewin

Original citation *JCI Insight*. 2024;9(6):e171961. <https://doi.org/10.1172/jci.insight.171961>

Citation for this corrigendum: *JCI Insight*. 2024;9(9):e181816. <https://doi.org/10.1172/jci.insight.181816>

The authors recently became aware of an inadvertent error in Figure 1I. The Young, *Cpt1a^{CKO}* panel was incorrect and the same as the Aged, *Cpt1a^{CKO}* panel. The correct panel is shown below.

The authors regret the error.

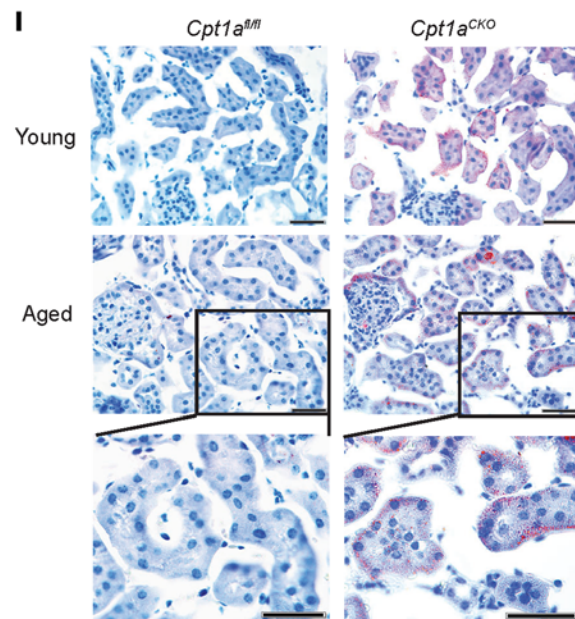


Figure 1.